



**Made in USA of Domestic and/or Imported Materials**

## **PRODUCT DATA SHEET**

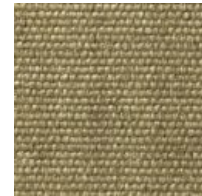
VEXTRA®– Style No: GLWV2401-TP

For additional information please contact [sales@auburnmfg.com](mailto:sales@auburnmfg.com)

TECHNICAL DATA	IMPERIAL	METRIC
NOMINAL BASE FABRIC WIDTH:	40 in 60 in	101.6 cm 152.4 cm
NOMINAL BASE FABRIC WEIGHT:	24.0 OZ/YD <sup>2</sup>	814 g/m <sup>2</sup>
NOMINAL BASE FABRIC THICKNESS:	0.055 in	1.397 mm
BASE FABRIC COUNT & WEAVE:	WARP: 19 yarns/in FILL: 11 yarns/in PLAIN WEAVE	WARP: 7.5 yarns/cm FILL: 4.3 yarns/cm PLAIN WEAVE
BASE FABRIC TEMPERATURE RESISTANCE:	1000° F	538° C
COATED FABRIC STABLE TO:	1500° F	816° C

### **PRODUCT HIGHLIGHTS**

- ❖ Content: 100% fiberglass yarns with stainless steel wire plied with fill yarns coated with vermiculite.
- ❖ Coating: Vermiculite.
- ❖ Standard Color: Bronze.
- ❖ Vermiculite is an inorganic, chemically inert, noncombustible & odorless coating.
- ❖ Material should be tested for its suitability in any application, particularly flexing applications at elevated temperatures. Users should also familiarize themselves with the SDS.
- ❖ Note: Width of finished product may be narrower due to shrinkage during coating.



ALL STATEMENTS HEREIN ARE EXPRESSIONS OF OPINION WHICH WE BELIEVE TO BE ACCURATE AND RELIABLE BUT ARE PRESENTED WITHOUT GUARANTEE OR RESPONSIBILITY ON OUR PART. ANYONE INTENDING TO USE RECOMMENDATIONS CONTAINED IN THIS PUBLICATION CONCERNING EQUIPMENT, PROCESSING TECHNIQUES OR PRODUCTS SHOULD FIRST SATISFY THEMSELVES THAT THE RECOMMENDATIONS ARE SUITABLE FOR THEIR USE AND MEET ALL APPROPRIATE SAFETY & HEALTH STANDARDS.