



**Made in USA of Domestic and/or Imported Materials**

## PRODUCT DATA SHEET

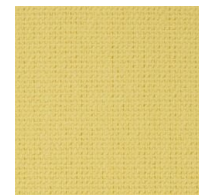
AMI-FLEX®– Style No: FL1200

For additional information please contact [sales@auburnmfg.com](mailto:sales@auburnmfg.com)

TECHNICAL DATA	IMPERIAL	METRIC
NOMINAL WIDTH:	40 in 60 in	101.6 cm 152.4 cm
NOMINAL WEIGHT:	12.0 OZ/YD <sup>2</sup>	407 g/m <sup>2</sup>
NOMINAL THICKNESS:	0.056 in	1.422 mm
BASE FABRIC COUNT & WEAVE:	WARP: 20 yarns/in FILL: 11 yarns/in PLAIN WEAVE	WARP: 7.9 yarns/cm FILL: 4.3 yarns/cm PLAIN WEAVE
TEMPERATURE RESISTANCE:	600° F	316° C

### PRODUCT HIGHLIGHTS

- ❖ Content: Yarns are a blend of meta & para-aramid with fiberglass inner core.
- ❖ Ravel Resistance Coating Available.
- ❖ Coatings decompose at temperatures below the fabric.
- ❖ Intended for commercial use. Do not launder.
- ❖ Material should be tested for its suitability in any application. Users should also familiarize themselves with the SDS.



ALL STATEMENTS HEREIN ARE EXPRESSIONS OF OPINION WHICH WE BELIEVE TO BE ACCURATE AND RELIABLE BUT ARE PRESENTED WITHOUT GUARANTEE OR RESPONSIBILITY ON OUR PART. ANYONE INTENDING TO USE RECOMMENDATIONS CONTAINED IN THIS PUBLICATION CONCERNING EQUIPMENT, PROCESSING TECHNIQUES OR PRODUCTS SHOULD FIRST SATISFY THEMSELVES THAT THE RECOMMENDATIONS ARE SUITABLE FOR THEIR USE AND MEET ALL APPROPRIATE SAFETY & HEALTH STANDARDS.