

# EverGreen®

## Elevated Temperature Cut 'n Wrap Insulation Kits

for More Challenging Environments



Removable/  
reusable  
insulation  
covers



Quick and  
easy on-site  
fabrication

Insulate valve  
components  
operating up  
to 700°F



Modular  
blankets make  
fabricating  
easy



Better suited  
for industrial  
environments



Patent Numbers:  
7914872  
8039080

[www.auburnmfg.com](http://www.auburnmfg.com)

# Ever Green ET Cut 'n Wrap Insulation Kits... removable/reusable insulation covers in elevated temperature environments.

Introducing new **Ever Green® Elevated Temperature (ET) Cut 'n Wrap™** insulation kits containing everything you need to quickly and easily fabricate and install removable/reusable insulation covers.

**Rated to 700°F**, Cut 'n Wrap insulation covers are a faster, more effective way to insulate bare piping components on steam and process lines. They are ideal for hot valves and fittings requiring periodic maintenance and inspection.

## Features

- 2" thick light density fiberglass insulation blanket
- Quilted design aids in flexibility, measuring and installing
- Cuts easily with utility knife
- Colors: evergreen, gray and white
- Maximum use temperature: 700°F on hot (challenge) side

## Benefits

- Quick and easy to install on-site
- Easy for contractors to use
- No special tools required — just a utility knife and stapler
- Perfect for convoluted, irregular surfaces
- Cut heat loss by at least 85%
- Reduce greenhouse gas emissions
- Immediate energy savings. Payback in months
- Removable and reusable
- Significantly reduce workplace temperatures
- Rated for systems operating up to 700°F
- Patented technology and all U.S. made

## Industries

Recommended for indoor use in elevated temperature applications:

- Food Processing
- Pharmaceuticals
- Paper Mills
- Hospitals
- Universities
- Government Facilities



*Ever Green® ET Cut 'n Wrap is an engineered insulation composite with a fiberglass inner core, a high-performance-polymer-coated woven glass fiber fabric outer layer, and a woven glass inner (challenge) layer.*

## Ask About our Edge Finishing Tape

*Edge Finishing Tape is available if you are using Ever Green ET for custom made removable covers or if you want a more 'finished' look on the job. Either sew or staple onto exposed edges as needed.*

## Modular Kits Allow Pipe Components to Be Insulated Easily and Quickly

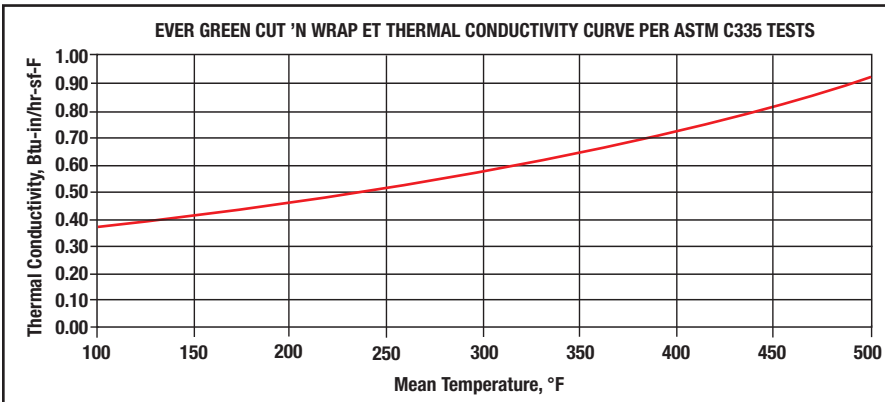
*"Modular thermal insulation blanket kits that meet ASTM C1695 allow contractors to fabricate and install R/R blankets on the job site using standardized materials. In addition, using a kit avoids the delay required of custom-made R/R blankets.*

*While a kit has a fixed thickness, the first inch of insulation reduces heat loss by at least 88 percent and provides the shortest payback. Overall, a modular kit allows pipe components to be insulated easily and quickly." – "Saving Energy by Insulating Pipe Components," ASHRAE Journal, October 2011.*



*Ever Green® ET modular insulation blankets are available in evergreen, gray and white*

# Save a Lot of Energy Without a Lot of Work



Mean Temperature °F	Apparent Thermal Conductivity Btu-in/hr-ft <sup>2</sup> -°F
100°	0.377
200°	0.470
300°	0.587
400°	0.732
500°	0.914

## Studies Show Insulation Significantly Corrects Thermal Energy Waste

"In one study, insulating (bare) components has been predicted to comprise 8% of buildings' total fuel use for heating. Payback periods of less than one year, and even as short as several months, are common when insulating previously bare components." – "Saving Energy by Insulating Pipe Components," *ASHRAE Journal*, October 2011.

## Technical Performance

- Fiberglass is formaldehyde free and meets ASTM C553, Type V
- Blanket meets 25/50 rating per ASTM E 84
- Fiberglass insulation meets ASTM C1695-10, Standard Specification for Fabrication of Flexible Removable and Reusable Insulation for Hot Service

## EVER GREEN® ET CUT 'N WRAP ESTIMATES WITH 150 PSI VALVES & FLANGES

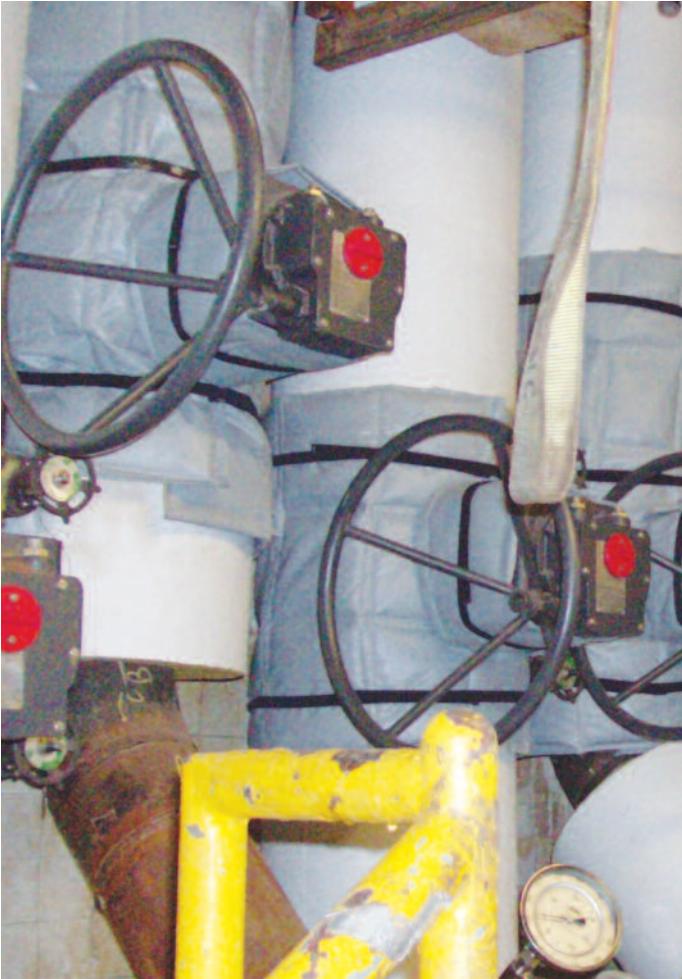
Project Name:

	Number of Components	Total Est. Area of Cut 'n Wrap (sf)	Total Est. Number Cut 'n Wrap Kits
Flange Pairs	5	19.6	0.6
Butterfly Valves	3	16.0	0.5
Check Valves	6	40.0	1.3
Ball Valves	6	40.0	1.3
Gate Valves	0	0.0	0.0
Gate Valve Bonnets	0	0.0	0.0
Gate Valve Stems	10	8.9	0.3
Elbows	2	20.1	0.6
Tees	3	31.9	1.0
Pressure Relief Valves	0	0.0	0.0
Strainers	0	0.0	0.0
Steam Traps	0	0.0	0.0
Straight Pipe	0	0.0	0.0
Other	0	0.0	0.0
<b>Overall Totals</b>	<b>35</b>	<b>177</b>	<b>6.0</b>

## Online Material Estimating Tool at [www.cutnwrap.com](http://www.cutnwrap.com)

Calculating the number of insulation kits you need for the job is quick and easy with AMI's online material estimating tool. Simply identify, by pipe size, the number of flanges, valves, bonnets, stems, elbows, tees, PRVx, strainers and steam traps you have and enter the number of components on the correct spreadsheet in the calculation program. Once you have entered all of your items, click on the SUMMARY page for the amount of Cut 'n Wrap Kits you will need for your job.

# Keep Ever Green Kits on Hand for Your Maintenance Team



## Cut 'n Wrap Kits

- 4 ft. x 8 ft. modularized insulation sheet pre-engineered from industrial-grade, coated fabric and insulation media rated to 700°F continuous service.
- Roll of double-sided hook and loop fastener

## Cut, Wrap and Strap – It's That Easy

- Simply measure the fitting area and cut the insulation sheet to size
- Wrap the exposed valve or fitting
- Secure with supplied self-sealing "Hook and Loop" fastener
- On-site fabrication
- Minimum tools required — just a utility knife, pliers, stapler and hook and loop attachment system

## About Us

Auburn Manufacturing has been serving the mechanical insulation industry for over 30 years with a wide array of safe, heat-resistant textiles to cover a range of extreme temperatures. Our manufacturing experience, market and technical knowledge gained through association with NIA and its members, and a focus on continuous improvement, all form the basis of new product development at AMI. We are proud to introduce Ever Green Cut 'n Wrap as the most recent example of our long-term commitment to the industry.



T: 1-800-264-6689 • E-mail: [sales@auburnmfg.com](mailto:sales@auburnmfg.com)

[www.auburnmfg.com](http://www.auburnmfg.com)



Ever Green Insulation Kits are manufactured in the U.S. The insulation composite is produced domestically and meets the Buy American requirements.



WE MAKE AMAZING™

